

## REPRISE THERMOSTATIC BATH/SHOWER, MODEL 5535.54X

- Classic Victorian styling
- Coordinated accessories available
- Cast brass valving
- Mixing valve cross handle controls on/off and volume
- Porcelain lever handle adjusts temperature
- Wax thermostatic unit automatically maintains water temperature even with changes in supply pressure and temperature
- 2-way diverter valve switches between showerhead and spout
- Optional 3-way diverter kit available for shower systems
- Includes hot limit safety stop
- Includes escutcheon plate and plaster guard
- Mixing valve 3/4" NPT inlets and outlets
- Diverter, showerhead and tub spout: 1/2" NPT

- Specify assembly finish: chrome, polished brass, polished nickel or brushed nickel
- 5535.541** Shower Only
- 5535.542** Bath/Shower

### Extension Kits

- M962331-XXX0A** Diverter Extension Kit
- 963234-0070A** Thermostatic Valve Extension Kit

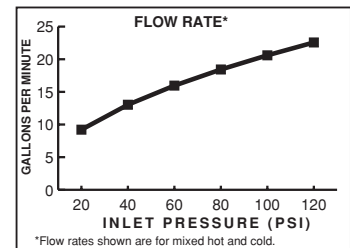


**Maximum Temperature Limit:** 112° F  
**Showerhead Maximum Flow Rate:** 2.5 gpm (9.5 L/min.)

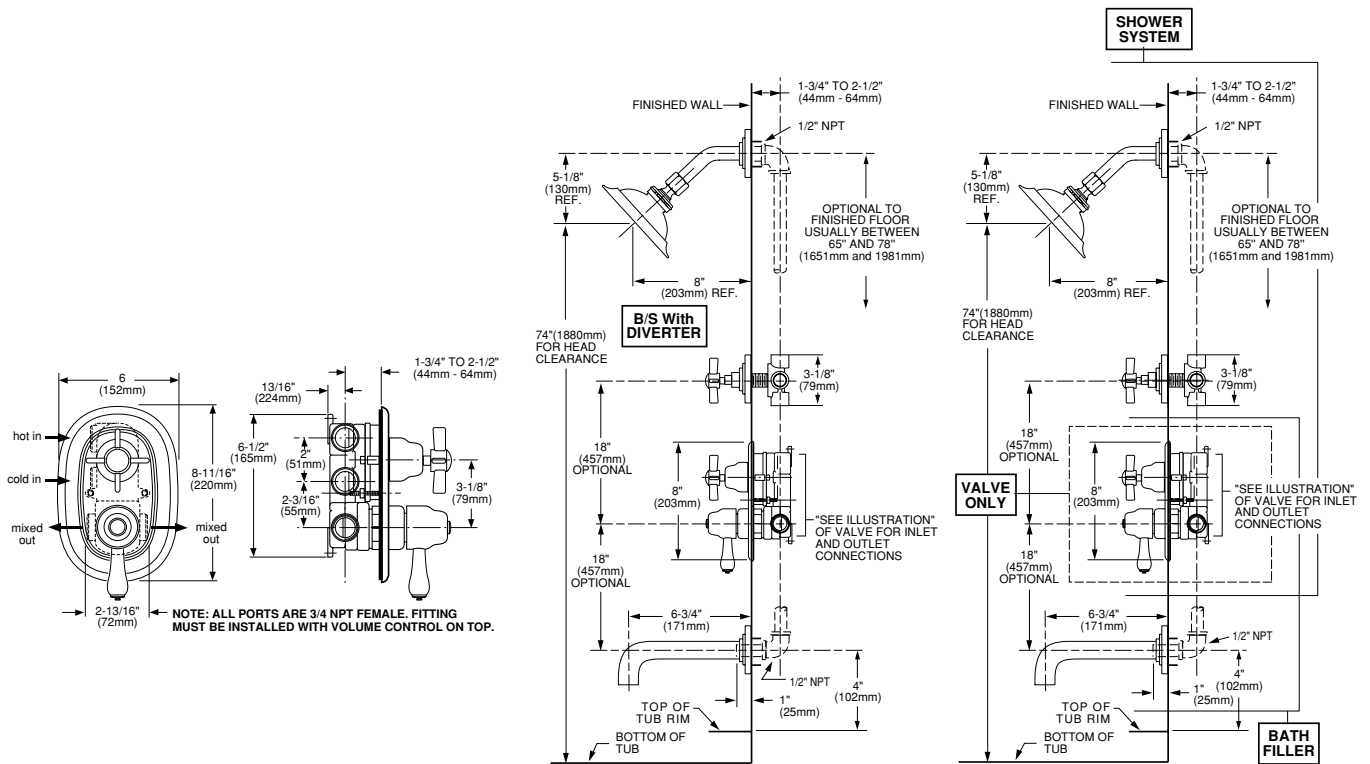
### CODES AND STANDARDS

These products meet or exceed the following codes and standards:

**ASSE 1016**  
**ASME A112.18.1**  
**CSA B125**



ROUGHIN DIAGRAM  
 SHOWN ON  
 REVERSE SIDE



**NOTE:**  
★ PLUG UNUSED OUTLET WHEN MIXER IS USED AS BATH OR SHOWER CONTROL.